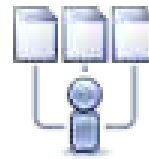




# ViewletACE™

2006



Ask



Collect



Evaluate

Create stunning, customizable Flash-based quizzes & surveys with ease.

Forget those dull HTML-based quizzes and surveys. Get the power of Flash to captivate your audience. ViewletACE (Ask, Collect, Evaluate) is the easiest way to create dynamic, customizable surveys and assessments without the need for extensive training and development time.

Use ViewletACE to create interactive, standalone quizzes or integrate with ViewletBuilder Viewlets to:

- Learn more about your customers
- Measure your staff's knowledge of your products and services
- Evaluate the impact and understanding of your web-based communications

## Ask

Query your audience with a variety of question types including:

- Short Answer - Fill in the Blank
- Short Answer - Selection from List
- Short Answer - Rating
- Multiple Choice - Single Answer
- Multiple Choice - Multiple Answers
- Multiple Choice - Fill in the Blanks
- Multiple Choice - Rating
- Multiple Choice True/False
- Likert Scale
- Drag and Drop
- Click Map
- Essay

## Collect

Quickly and easily obtain individual quiz reports and viewing statistics using ViewletCentral, Qarbon's revolutionary server-based storage and reporting system.

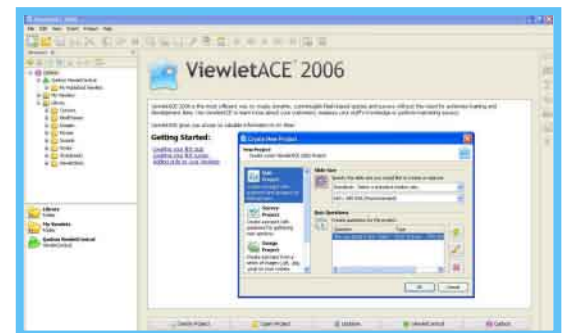
Alternatively, deploy AICC, SCORM 1.2 and SCORM 2004 compliant content to a Learning Management System (LMS)

## Evaluate

Measure response data using ViewletCentral's graphical "dashboard" application or export the data to external reporting & analysis tools.

## How Do I Learn More?

To learn more about how ViewletACE can add value to your organization, contact us at (408) 907-4810 or sales@qarbon.com.



Easy to use interface

System Requirements:  
Windows98/98SE/NT/2000/XP  
-Intel PIII/AMD K6 550 MHz  
-256+ MB RAM  
-16 bit+Video card - 800x600 min.

Linux Mandrake/SuSE/Red Hat(Future)  
COMING SOON

And best of all...  
**it's FREE!\***

\*Use of ViewletACE is free when publishing your content on Qarbon Public ViewletCentral. ViewletCentral comes with a Free Discovery Plan which includes 3MB of disk space, 1,000 Viewlets' views per month and banner-enabled Viewlets. Extended paid plans with more space, more views, and no banners are available.